



**Enlarged View
Scale 1:100**

THEYDON ROAD

11.5m

BELL COMMON


18.7m

Installation of Double Yellow
lining
(Dia 1018.1,Sch7,Pt 4,ltm 1)

General Construction Notes

1. Do not scale. This drawing is to be read in conjunction with all other contract drawings and documents.
2. All works to be in accordance with the Department of Transport's Specification for Highway Works and Essex County Council Specifications and Standard Construction Drawings.
3. All traffic signs and lines are to comply with The Traffic Signs Regulations and General Directions 2016. Markings are to be white thermoplastic screed with applied solid glass beads unless otherwise stated.

Key

 Double Yellow Lining (DIA 1018.1,Sch 7 ,Pt 4,ltm 1)

Rev.	Date	Description of revision	Drawn	Checked	Reviewed	Approved

DRAWING STATUS
CONSULTATION



Mark Rowe, Service Director, Highways
Seax House, Victoria Road South, Chelmsford, CM1 1QH.
Tel: 0845 6037631
© Essex County Council

SCHEME TITLE
Bell Common , Epping

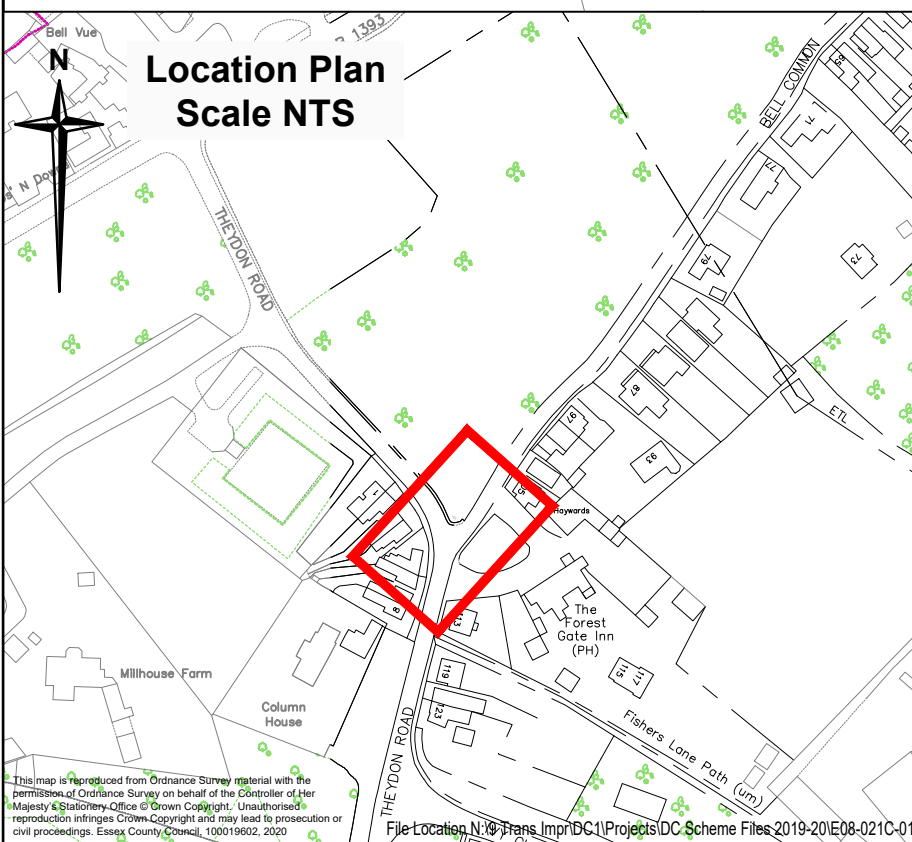
DRAWING TITLE
TRO Request

DESIGNED	DRAWN	CHECKED	REVIEWED	APPROVED
HC	HC			
DATE JUL 20	DATE JUL 20	DATE	DATE	DATE

DRAWING UNITS I.U.N.O.
DIMENSIONS IN METRES
LEVELS IN METRES

SCALE AT A3 (420x297mm)
A/S

DRAWING No. **E08-021C-015-00-002** REV. -



This map is reproduced from Ordnance Survey material with the permission of Ordnance Survey on behalf of the Controller of Her Majesty's Stationery Office. © Crown Copyright. Unauthorised reproduction infringes Crown Copyright and may lead to prosecution or civil proceedings. Essex County Council, 100019602, 2020